

stonebranch



Libelle

Libelle & Stonebranch

*SAP System Copy/Refresh Automation with Libelle LSC
and Stonebranch UAC*

SUGG

October 6, 2017 Dresden

Frank Bayer

Director Sales & Marketing

Libelle AG



Agenda

October, 6; 10:30 – 11:00

stonebranch



Libelle

01 Introduction Libelle AG
Company Overview, Partnership etc.

02 Solution Libelle SystemCopy
Typical assumptions, benefits

03 Live Demo

04 Joint Solution Overview
Joint value proposition

05 Summary





1994



ESTABLISHMENT

owner-managed
management board
Lars Albrecht (CEO)
Hans-Joachim Krueger (CTO)
Juergen Zipf (CFO)



>90



EMPLOYEES

20 Years ABAP Development
20 Years SAP- and Non-SAP Systems
Standard Software Development (GER)
Hotline + Support (GER/USA)

6



LOCATIONS

Germany
Stuttgart (HQ), Schwelm, Walldorf, Bochum
France
Clichy (Paris)
USA
Atlanta

70



PARTNER NETWORK

Business Partner
Local + Global
Technology Partner
SAP SE, Oracle, IBM, Microsoft, ...

>400



CUSTOMERS

Worldwide, all industries,
SME / World Leader
10 GB to >100 TB Landscapes
>2.500 Licenses
>3.000 Installations
Development Partnerships



STANDARD SOFTWARE



MSSQL
MySQL
Oracle
HANA
Windows
WebDynpro
DB2
ABAP/OO
Unix
Oracle
MaxDB
ABAP

All IT-Systems

Data-Mirroring

- Disaster Recovery & High Availability scenarios
- Data mirroring over any distance
- System/Database relocation

Data Anonymization

Build-up of testing, training, quality assurance systems with realistic-looking and consistent data that can not be traced back.

SAP®-Systems

System Copies

- System Refreshes,
- Build-up of testing, training, quality assurance systems ,
- Copy of individual clients,...

Securing Process Quality

- Monitoring and management of system and business processes
- Monitoring and management of IDocs



KNOW HOW

Libelle-specific Services

Consulting, implementation, customization and support for the entire Libelle Solution Portfolio.

General Services

System and database relocations, migrations, updates, upgrades.

SAP Basis: Consulting

Consulting, implementation, customization, project implementation (release upgrades, migrations, installations).

SAP Basis: Operation

Support Service for the SAP system landscape (monitoring, troubleshooting), operational support (AMS) around the SAP base and their life cycle.

ABAP and ABAP/OO: Consulting, Development & Support

Customization and development of software and additional programs for installation, maintenance, data extraction. Consulting master / transaction data, data migrations with ALE, EDI, IDOC, RFC, LSMW.

Agenda

October, 6; 10:30 – 11:00

stonebranch



Libelle

01 Introduction Libelle AG
Company Overview, Partnership etc.

02 Solution Libelle SystemCopy
Typical assumptions, benefits

03 Live Demo

04 Joint Solution Overview
Joint value proposition

05 Summary





▪ Typical Assumptions about Copies of SAP Systems:

They ...

- ...must be scheduled weeks before execution
 - ...are complex and time consuming
 - ...are resource-intensive
 - ...require specific knowledge
 - ...block key staff capacity due to the large amount of manual intervention
 - ...are error-prone
- Especially in complex environments they are often a critical challenge and mutate to a real cost factor in the long run.
- **Usual effect:** Critical environments don't get refreshed with required frequency.

What is Libelle SystemCopy (LSC)?



- Libelle SystemCopy is a Software which automates and optimizes System Refreshes end-to-end.
- It includes automation framework with a modern, role-based GUI.
- It covers all typically ~290 different SAP® pre- and post-processing steps and fully orchestrates the DB Copy phase
- Libelle provides a portfolio of 450+ pre-configured refresh tasks with its repository.

The screenshot displays the Libelle SystemCopy GUI in the 'Monitor' tab. The interface shows a progress bar for the overall process, which is divided into four stages: Check (100%), Pre (100%), Copy (100%), and Post (50%). Below the progress bar, a table lists various tasks and their progress. The 'LACTBIMP' task is highlighted in yellow, indicating it is currently running or about to start.

| UID | Name | Start time | End time | Dura... | Prog... |
|-----------|---|---------------------|--------------------|----------|------------|
| LSPADIMP | SPAD:Import entries into printer configuration tables | 3/13/14 12:35:55... | 3/13/14 12:36:1... | 00:00:15 | 100% |
| LSTMSIMP | STMS: Import STMS settings tables | 3/13/14 12:36:15... | 3/13/14 12:36:3... | 00:00:23 | 100% |
| LSMLGIMP | SMLG:Import logon groups | 3/13/14 12:36:19... | 3/13/14 12:36:4... | 00:00:30 | 100% |
| LCCMSIMP | RZ20: Import CCMS tables | 3/13/14 12:36:24... | 3/13/14 12:36:5... | 00:00:31 | 100% |
| LSTATIMP | ST03: Import statistics tables | 3/13/14 12:36:55... | 3/13/14 12:37:4... | 00:00:46 | 100% |
| LDB13IMP | DB13: Import scheduling tables | 3/13/14 12:37:00... | 3/13/14 12:37:4... | 00:00:46 | 100% |
| LPROFIMP | RZ10:Import profiles tables | 3/13/14 12:37:04... | 3/13/14 12:37:5... | 00:00:50 | 100% |
| LOMODIMP | RZ04: Import operating mode tables | 3/13/14 12:37:09... | 3/13/14 12:37:5... | 00:00:49 | 100% |
| LHTPIIMP | SMICM: Import HTTP tables | 3/13/14 12:37:13... | 3/13/14 12:38:0... | 00:00:53 | 100% |
| LEDIALIMP | WE20: Import EDI and ALE tables | 3/13/14 12:37:17... | 3/13/14 12:38:0... | 00:00:50 | 100% |
| LBWIMP | RSA1: Import BW tables | | | | Deactiv... |
| LACTBIMP | SNC: Import access control tables | 4/8/14 7:13:09 PM | | 00:00:22 | 0% |
| LCERTIMP | STRUST:Import certificate tables | 4/8/14 7:13:16 PM | | 00:00:16 | 0% |
| LSSO2IMP | SSO2: Import ACL | 4/8/14 7:13:19 PM | | 00:00:11 | 0% |

System Refresh Automation Components



1. **Standardized Tasks:** Functional units to encapsulate steps in the Refresh Procedure.
2. **Server Agents:** Provide and Advanced Framework for Automation and Integration into Environment.
3. **Management Console:** Management and Monitoring of LSC Procedure (or CLI)

Agenda

October, 6; 10:30 – 11:00



Libelle

01 Introduction Libelle AG
Company Overview, Partnership etc.

02 Solution Libelle SystemCopy
Typical assumptions, benefits

03 Live Demo

04 Joint Solution Overview
Joint value proposition

05 Summary





Live Demo
Libelle *SystemCopy*



Libelle

Agenda

October, 6; 10:30 – 11:00



Libelle

01 Introduction Libelle AG
Company Overview, Partnership etc.

02 Solution Libelle SystemCopy
Typical assumptions, benefits

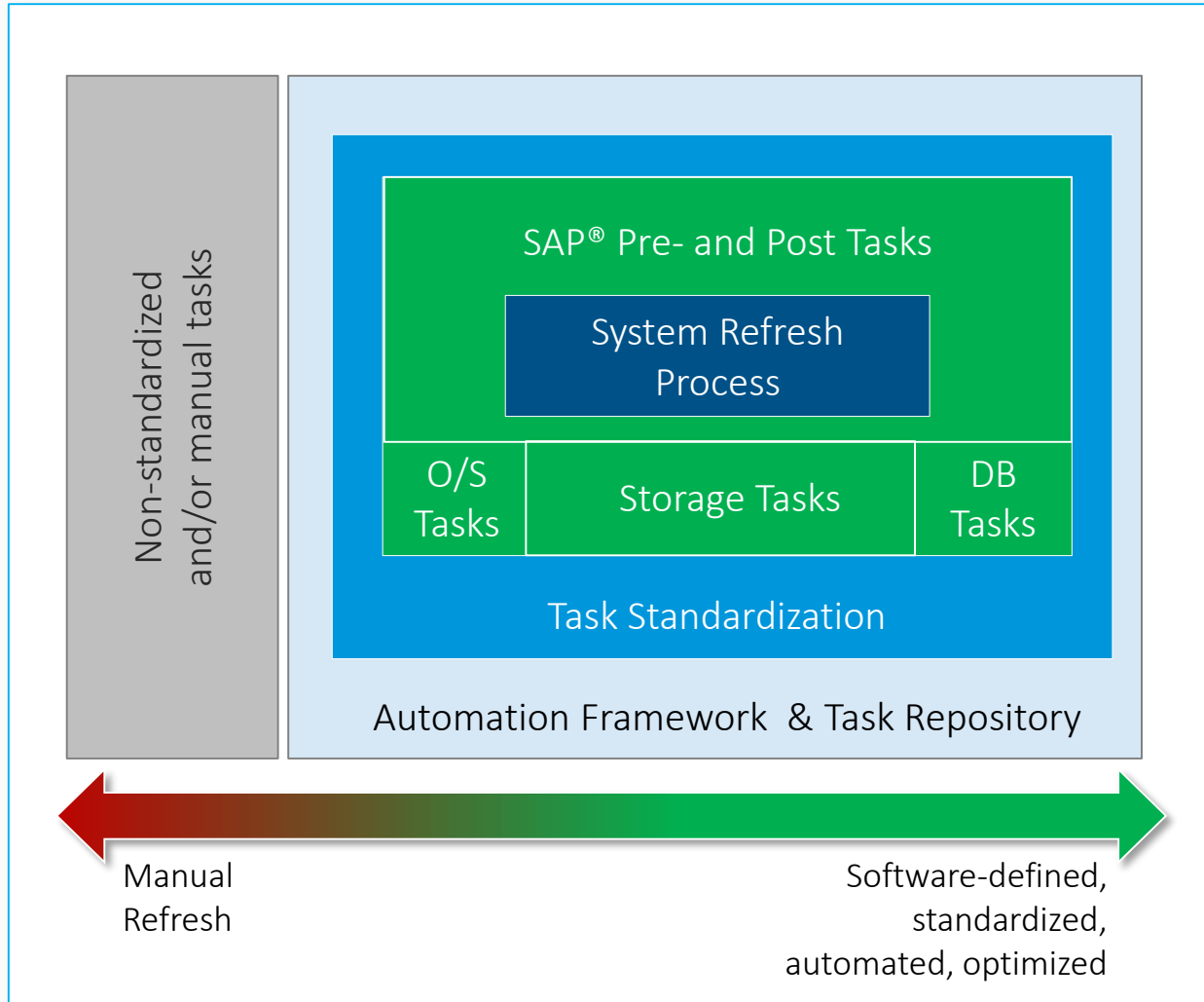
03 Live Demo

04 Joint Solution Overview
Joint value proposition

05 Summary



Software-Defined System Refreshes



- Addresses the requirement of IT Department to be more flexible with lower operating costs.
- Aggressively increase operational efficiency of IT's own operation and reduce endless attention to repeatable tasks

Help IT to transition from iterating the same repetitive tasks to a Service Broker.

Libelle SystemCopy Tasks



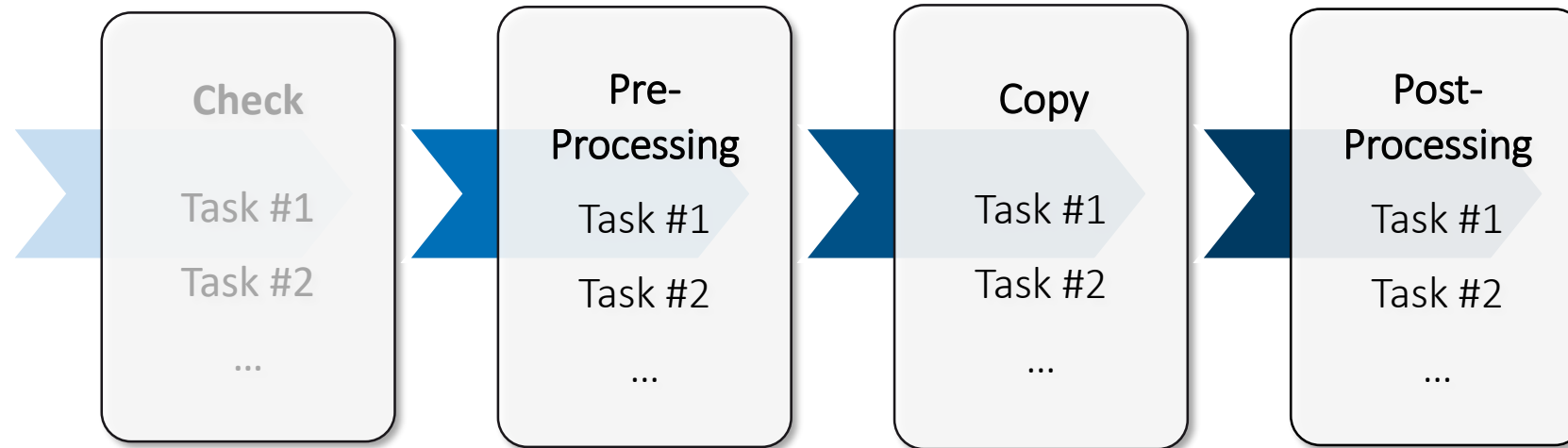
Libelle **SystemCopy** encapsulates Tasks and manages the execution, Tasks include:

1. Running ABAP Programs
2. Executing Command Scripts
3. Exporting or Importing Database Tables
4. Executing SQL Scripts
5. Executing SAP® Transactions
6. Wait for Administrator Interaction („Interactive Task“)

We have been actively building a Task Repository to address the large variation of SAP® landscape requirements (Databases, Platforms, Application, and best practices)

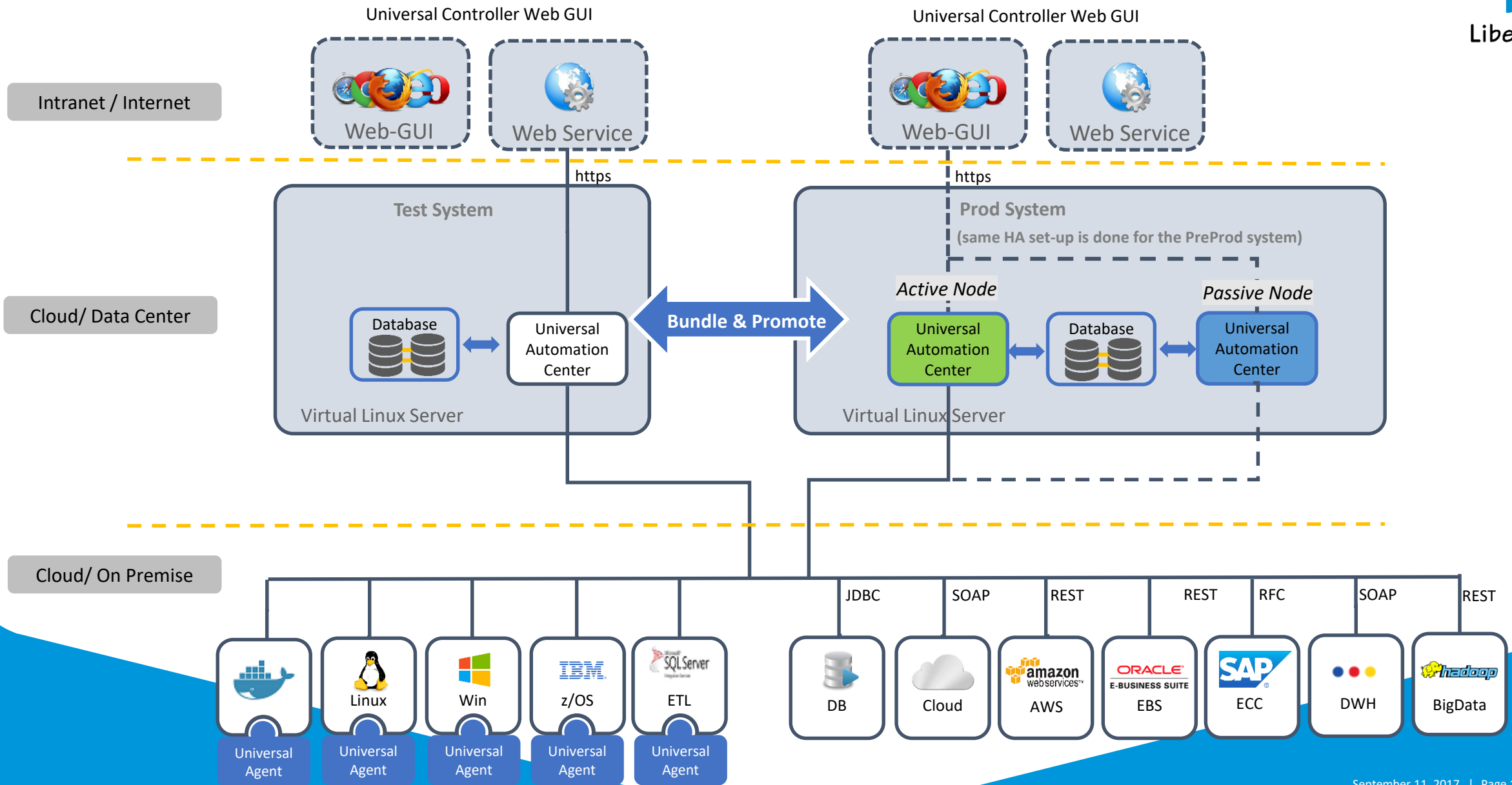
| Phase | UID | Name | Type | Wait |
|----------|--------------|---|------|------|
| Post 100 | LTMHISTIMP | STMS: Import content of TMS History tables | imp | No |
| Post 101 | LLPCONFIGIMP | LPCONFIG: Import content of SOAP related tables | imp | No |
| Post 102 | LVARIANTIMP | SE38: Import content of ABAP variant related tables | cmd | No |
| Post 103 | LDBCONDEL | DB59: Delete Database connection settings | del | No |
| Post 104 | LDBCONIMP | DB59: Import database connection settings | imp | No |
| Post 105 | LTRNSDEL | STMS: Delete transport request number from source | del | No |
| Post 106 | LTRNSIMP | STMS: Set original transport request number | imp | No |
| Post 107 | LLOGMCHK | DB: Check archive log mode | cmd | No |
| Post 108 | LGLOBAPT | DB: Adapt global param name if it exists. | sql | No |
| Post 109 | LMAILUPD | Update status of mail queue | sql | No |
| Post 110 | LJAVACONFIMP | JAVA: Reset java config files | cmd | No |
| Post 111 | LJAVATABDEL | JAVA: Drop Java config tables | sql | No |
| Post 112 | LJAVATABIMP | JAVA: Import Java config tables | cmd | No |
| Post 113 | LSTARTSAP | SAP: Start sap | intv | No |
| Post 114 | LSTMSSET | STMS: Configure, Unlock Target System and Adjust Do... | intv | No |
| Post 115 | LUSERIMP | STMS: Import users back into the target system | cmd | No |
| Post 116 | LUSERPOST | SCC7: Post Import Processing | abap | No |
| Post 117 | LSAPRESTART | SAP: Restart SAP 2 | intv | No |
| Post 118 | LRZ11SET | RZ11: Set rdisp/max_wprun_time parameter into unlimited | abap | No |
| Post 119 | LCONSDBCHK | SM65: Consistency check DB tables | abap | No |
| Post 120 | LSTMSQADEL | STMS: Delete content of TMS-QA tables | del | No |
| Post 121 | LSTMSQAIMP | STMS: Import content of TMS-QA tables | imp | No |
| Post 122 | LQUEUEGET | STMS: Get Delta Transports for reimport into Target | abap | No |
| Post 123 | LQUEUESET | STMS: Import Delta Transports into Target | abap | No |

System Refresh Phases



- **Pre-Processing:** Prepare the QAS System for the System Copy by e.g. exporting critical tables, or halt running QAS operation
- **Copy:** Create a Database Copy from Production to the QAS system
- **Post-Processing:** Adjust the QAS System and fresh data to work properly in a QAS setting and not interfere with production

Scheduling Architecture Overview



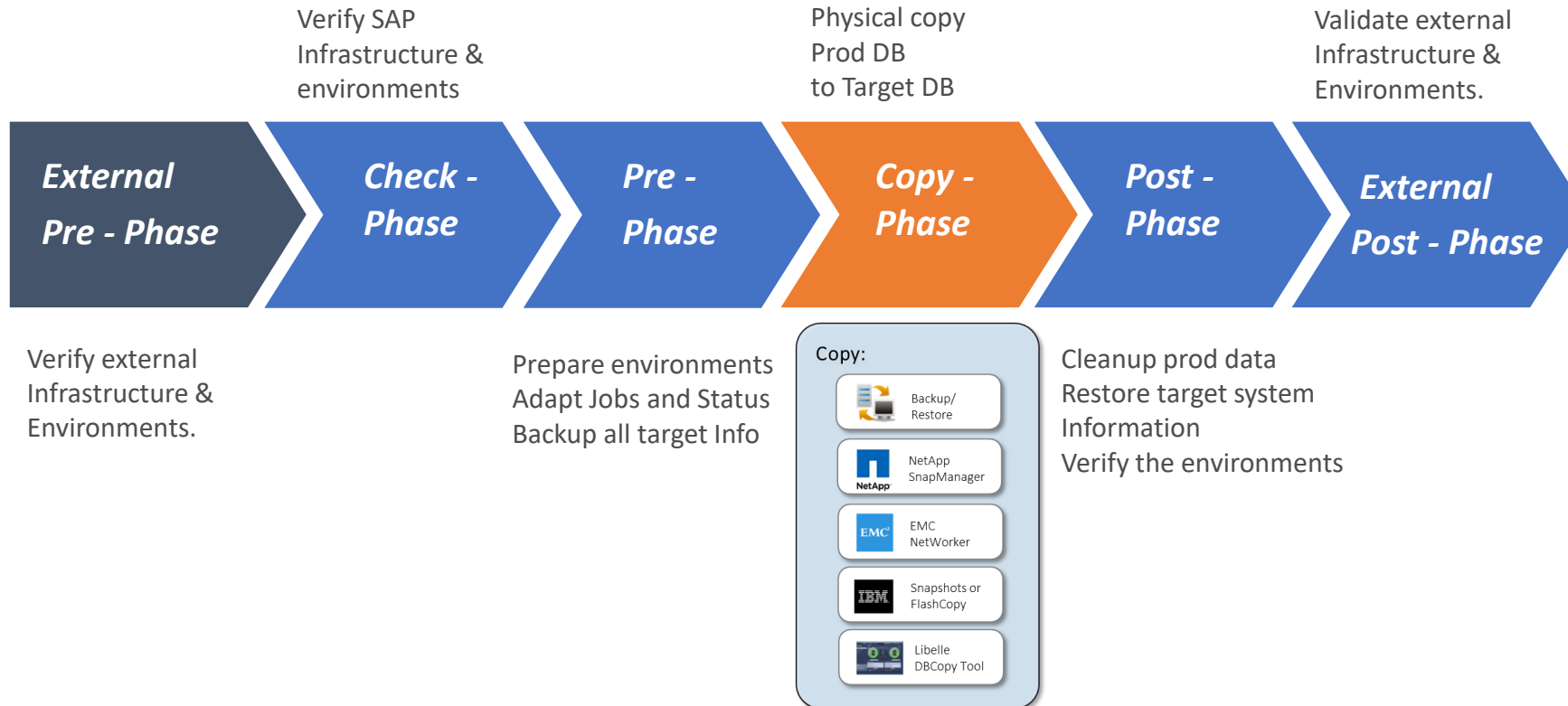
System Refresh: Workflow based approach

SAP based or external Tools

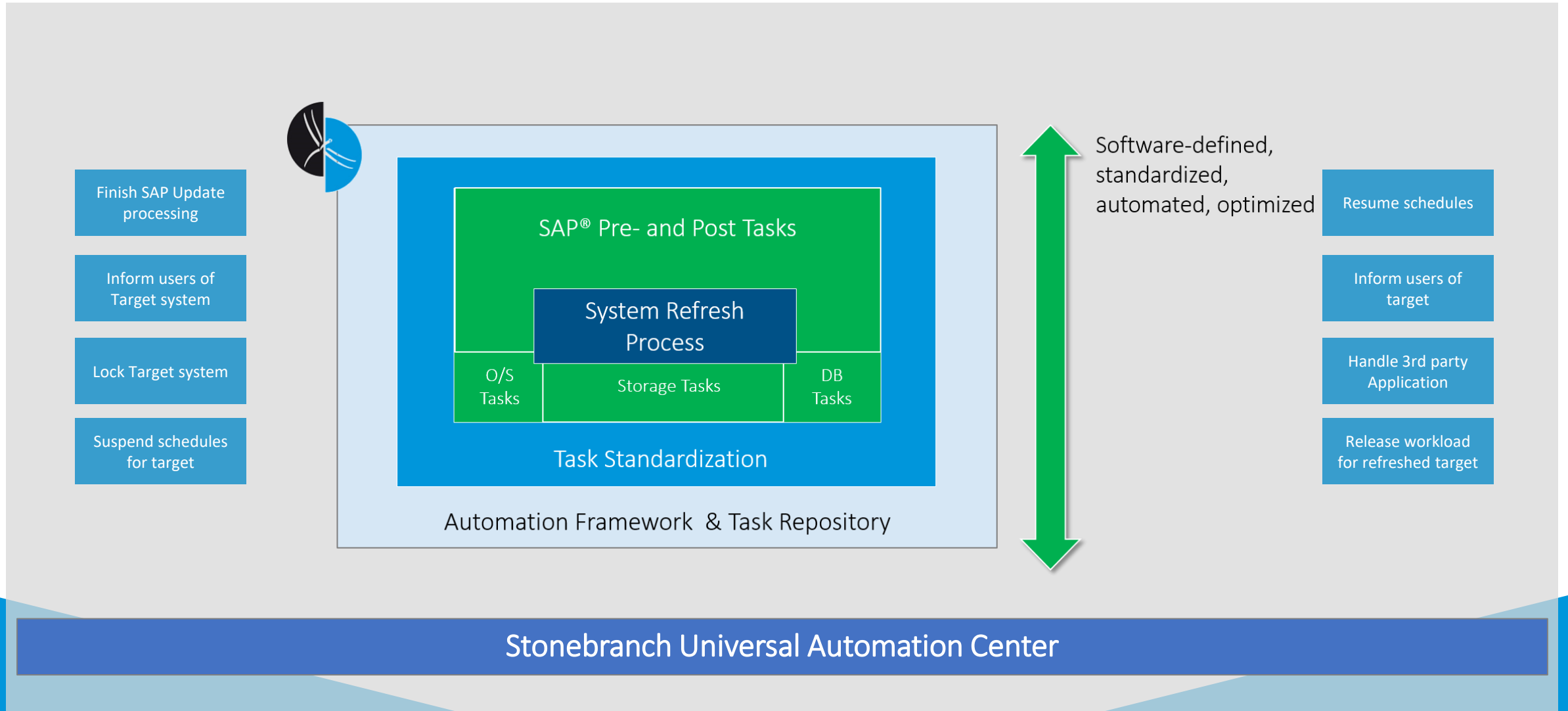
stonebranch



Libelle



Universal Automation Center provides a central view on the entire System Copy Process incl. SAP and Non SAP steps



The screenshot displays the Stonebranch Universal Controller interface. The top header includes the Stonebranch logo, "SAP® Certified Integration with Applications on SAP HANA®", and "Universal Controller™". The main window title is "Test Ctrl Hannover", with a timestamp of "2017-09-08 14:55 +0200" and the user "Administrator". The interface features a left-hand navigation pane with categories such as Workflow Tasks, Linux/Unix Tasks, Windows Tasks, z/OS Tasks, Universal Command T..., SAP Tasks, File Transfer Tasks, Manual Tasks, Timer Tasks, SQL Tasks, Stored Procedure Tasks, Email Tasks, Task Monitors, File Monitors, FTP File Monitors, System Monitors, Variable Monitors, Application Control Ta..., and Web Service Tasks. The main workspace shows a workflow diagram with three steps: "SAP System Refresh Preparation - Non SAP", "SAP_SYSTEM_COPY_SB", and "SAP System Refresh Post Tasks - Non SAP". Each step is represented by a document icon with a tree structure. The workflow is connected by arrows, indicating a sequential process.

SAP System Refresh Process in Action

Libelle SystemCopy 4.4.0.058 Administration

Configurations: SAP_SYSTEM_COPY_SB

General: You can define, edit, and administrate your tasks in the task table below.

| Copy | Phase | UID | Diagon |
|--------|----------------|--------|--------|
| Copy 1 | LSYSSCHK | | Diagon |
| Copy 2 | LSTESTCHK | | Diagon |
| Copy 3 | LTEST_DBSHADOW | LIBEL | |
| Copy 4 | LTEST_FSSHADOW | LIBEL | |
| Copy 5 | LPDCCOPY | LIBEL | |
| Copy 6 | LFFCOPY | LIBEL | |
| Copy 7 | LCOPYCHK | DB. CT | |
| Copy 8 | LTDBSWCH | LIBEL | |

stonebranch SAP Certified Integration with Applications on SAP HANA®

Workflow Monitor: SAP System Copy

| Task Name | Type | Task Description | Status |
|--|----------|--|---------|
| SAP_SYSTEM_COPY_SB | Workflow | Input SAP System Copy Configuration from LSC | Success |
| SAP_SYSTEM_COPY_SB | Workflow | Input SAP System Copy Configuration from LSC | Success |
| LSC_02_Create LSC WF for SAP System Copy | Window | Create an SAP System Copy Workflow base | Success |
| LSC_01_Import LSC TASK for SAP System Copy | Window | Imports the LSC Workflow based on the giv | Success |

SAP System Copy Running Flow

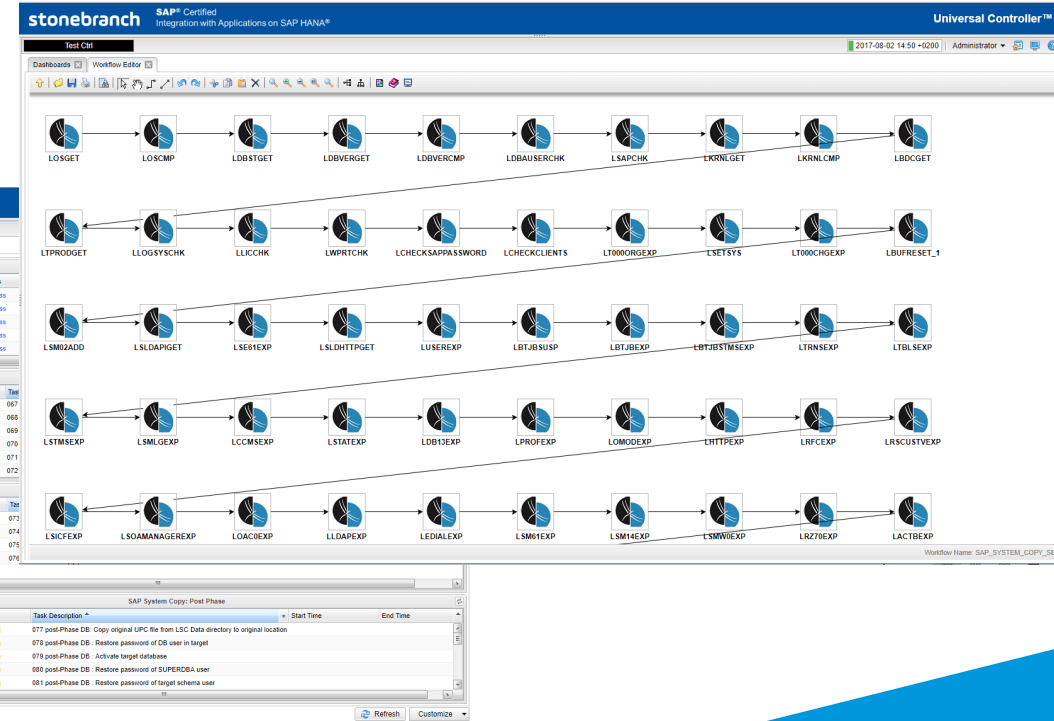
| Instance Name | Type | Status | Start Time |
|--|----------|---------|---------------------------|
| SAP_SYSTEM_COPY_SB | Workflow | Running | 2017-08-02 14:51:31 +0200 |
| LSC_01_ImportLSC TASK for SAP System Copy | Window | Success | 2017-08-02 14:42:29 +0200 |
| LSC_02_Create LSC WF for SAP System Copy | Window | Success | 2017-08-02 14:46:28 +0200 |
| Import SAP System Copy Configuration from LSC Workflow | Success | Success | 2017-08-02 14:42:29 +0200 |

SAP System Copy all Steps

| Task Name | Task Description | Create |
|-------------|--|---------|
| LOGSET | 001 check-Phase OS: Get version information | 2017-14 |
| LOSCMP | 002 check-Phase OS: Compare version information | 2017-14 |
| LDBSTGET | 003 check-Phase DB: Check database | 2017-14 |
| LDBVERGET | 004 check-Phase DB: Get database version | 2017-14 |
| LDBVERCMP | 005 check-Phase DB: Compare database versions | 2017-14 |
| LDBAUSERCHK | 006 check-Phase DB: Check database users | 2017-14 |
| LSAPCHK | 007 check-Phase SAP: Check SAP running | 2017-14 |
| LKRNLGET | 008 check-Phase SAP: Get SAP release and patch level | 2017-14 |
| LKRNLGMP | 009 check-Phase SAP: Compare SAP release and patch level | 2017-14 |
| LSCDGET | 010 check-Phase SAP: Check for TMS Backup Domain Controller | 2017-14 |
| LTPRODGET | 011 check-Phase SAP: Check target system for production flag | 2017-14 |
| LLOGSYSCHK | 012 check-Phase SAP: Check logical systems | 2017-14 |
| LLCCCHK | 013 check-Phase SAP: Check if license file is provided | 2017-14 |

SAP System Copy Post Phase

| Instance Name | Status | Task Description | Start Time | End Time |
|---------------|---------|--|------------|----------|
| LTEST_DBSHAD | Success | 077 post-Phase DB: Copy original LSC file from LSC Data directory to original location | | |
| LRESTDUSER | Waiting | 078 post-Phase DB: Restore password of DB user in target | | |
| LDBONLINE | Waiting | 079 post-Phase DB: Activate target database | | |
| LSUPERDBASET | Waiting | 080 post-Phase DB: Restore password of SUPERDBA user | | |
| LSAPSDSET | Waiting | 081 post-Phase DB: Restore password of target schema user | | |



System Copy Process in Action

Reading LSC System Copy Workflow

stonebranch SAP® Certified Integration with Applications on SAP HANA® Universal Controller™

Test Ctrl 2017-08-02 14:48 +0200 Administrator

Dashboards

SAP System Copy

| Task Name | Type | Task Description |
|---|----------|---|
| Import SAP System Copy Configuration from LSC | Workflow | Import SAP System Copy Configuration from LSC - requires the Variable for the system copy workflow in LSC |
| SAP_SYSTEM_COPY_SB | Workflow | SAP System Copy Workflow from LSC |
| LSC_02_Create LSC WF for SAP System Copy | Windows | Create an SAP System Copy Workflow based on the defined workflow in Libelle LSC |
| LSC_01_Import LSC TASK for SAP System Copy | Windows | Imports the LSC Workflow based on the given LSC_NAME - requires Variable LSC_NAME set in main WF |

SAP System Copy Running Flow

| Instance Name | Type | Status | Start Time | End Time | Duration In Seconds |
|---|----------|---------|---------------------------|----------|---------------------|
| Import SAP System Copy Configuration from LSC | Workflow | Running | 2017-08-02 14:42:29 +0200 | | |
| LSC_02_Create LSC WF for SAP System Copy | Windows | Waiting | | | |
| LSC_01_Import LSC TASK for SAP System Copy | Windows | Running | 2017-08-02 14:42:29 +0200 | | |

SAP System Copy all Steps

| Task Name | Task Description | Created |
|-------------|--|---------------------------|
| LOSGET | 001 check-Phase OS: Get version information | 2017-08-02 14:43:04 +0200 |
| LOSCMP | 002 check-Phase OS: Compare version information | 2017-08-02 14:43:04 +0200 |
| LDBSTGET | 003 check-Phase DB: Availability | 2017-08-02 14:43:05 +0200 |
| LDBVERGET | 004 check-Phase DB: Get database version | 2017-08-02 14:43:06 +0200 |
| LDBVERCMP | 005 check-Phase DB: Compare database versions | 2017-08-02 14:43:07 +0200 |
| LDBAUSERCHK | 006 check-Phase DB: Check database users | 2017-08-02 14:43:07 +0200 |
| LSAPCHK | 007 check-Phase SAP: Check SAP running | 2017-08-02 14:43:08 +0200 |
| LKRNLGET | 008 check-Phase SAP: Get SAP release and patch level | 2017-08-02 14:43:09 +0200 |
| LKRNLCMP | 009 check-Phase SAP: Compare SAP release and patch level | 2017-08-02 14:43:10 +0200 |
| LBCGGET | 010 check-Phase SAP: Check for TMS Backup Domain Controller | 2017-08-02 14:43:11 +0200 |
| LTPRODGET | 011 check-Phase SAP: Check target system for production flag | 2017-08-02 14:43:11 +0200 |
| LLOGSYSCHK | 012 check-Phase SAP: Check logical systems | 2017-08-02 14:43:12 +0200 |
| LLICCHK | 013 check-Phase SAP: Check if license file is provided | 2017-08-02 14:43:13 +0200 |
| LWPRTCHK | 014 check-Phase SAP: Check the work process runtime | 2017-08-02 14:43:13 +0200 |

SAP System Copy: Check Phase

| Instance Name | Status | Task Description | Start Time | End Time |
|-------------------|--------|------------------|------------|----------|
| No items to show. | | | | |

SAP System Copy: Pre Phase

| Instance Name | Status | Task Description | Start Time | End Time |
|-------------------|--------|------------------|------------|----------|
| No items to show. | | | | |

SAP System Copy: Copy Phase

| Instance Name | Status | Task Description | Start Time | End Time |
|-------------------|--------|------------------|------------|----------|
| No items to show. | | | | |

SAP System Copy: Post Phase

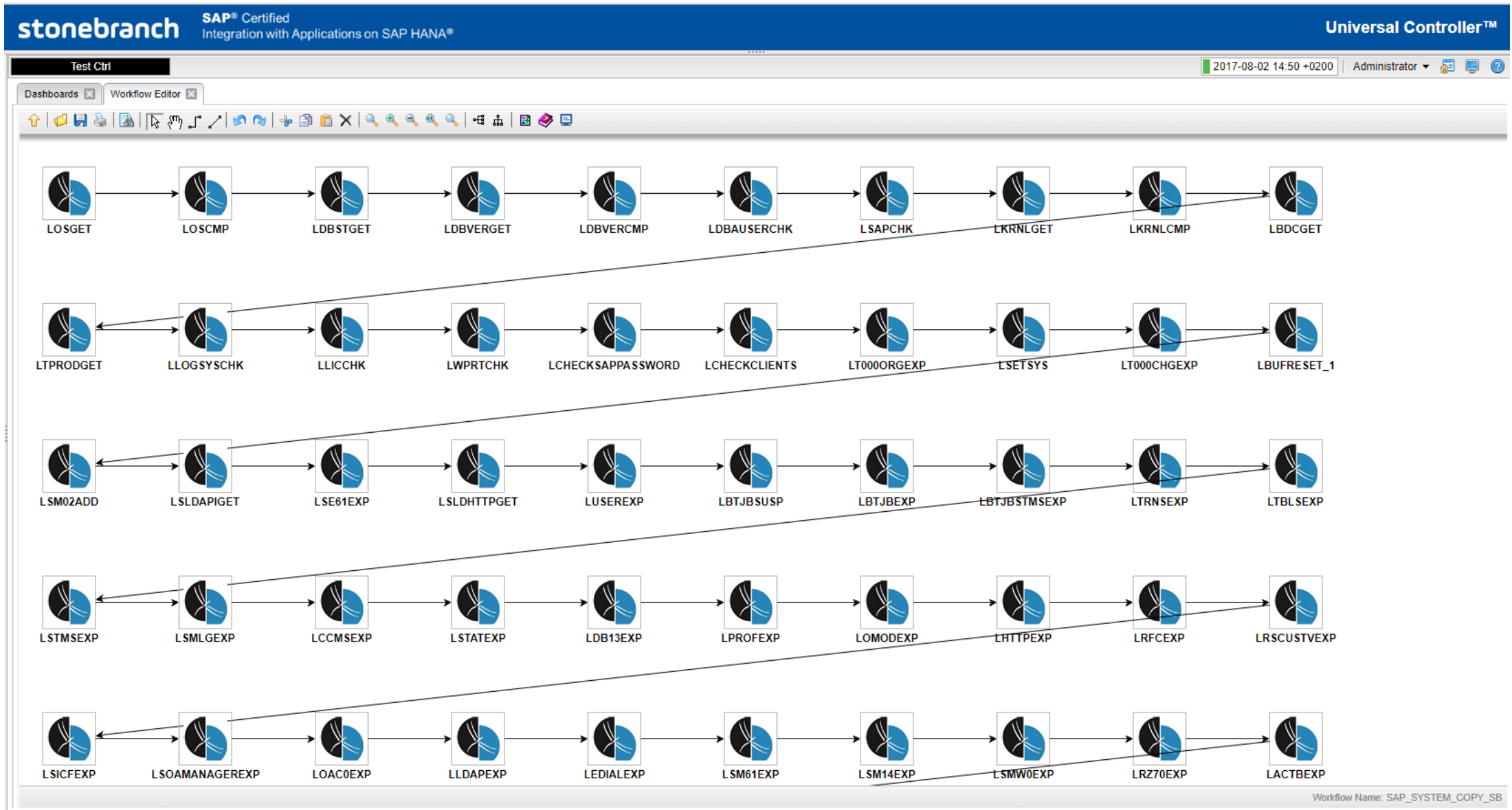
| Instance Name | Status | Task Description | Start Time | End Time |
|-------------------|--------|------------------|------------|----------|
| No items to show. | | | | |

Administrator's Home | Reporting DWH/SAP | ETL-HR Workflow SSIS/SAP | SAP Conversion Monitor | Docker | SAP LSC System Copy

Refresh | Customize

System Copy Process in Action

Imported LSC System Copy Workflow



Real-time Web-based Dashboard view on the System Copy Process : Example shows the execution of Copy Phase

stonebranch SAP® Certified
Integration with Applications on SAP HANA®
Universal Controller™

Test Ctrl
2017-08-02 14:59 +0200
Administrator

SAP System Copy

| Task Name | Type | Task Description |
|---|----------|--|
| Import SAP System Copy Configuration from LSC | Workflow | Import SAP System Copy Configuration from LSC |
| SAP_SYSTEM_COPY_SB | Workflow | SAP System Copy Workflow from LSC |
| LSC_02_Create LSC WF for SAP System Copy | Windows | Create an SAP System Copy Workflow based on the given LSC Task |
| LSC_01_Import LSC TASK for SAP System Copy | Windows | Imports the LSC Workflow based on the given LSC Task |

SAP System Copy: Check Phase

| Instance Name | Status | Task Description | Start Time | End Time |
|------------------|---------|--|---------------------------|---------------------------|
| LLOGSYSCHK | Success | 012 check-Phase SAP: Check logical systems | 2017-08-02 14:52:44 +0200 | 2017-08-02 14:52:44 +0200 |
| LLICCHK | Success | 013 check-Phase SAP: Check if license file is provided | 2017-08-02 14:52:51 +0200 | 2017-08-02 14:52:51 +0200 |
| LWPRTCHK | Success | 014 check-Phase SAP: Check the work process runtime | 2017-08-02 14:52:57 +0200 | 2017-08-02 14:52:57 +0200 |
| LCHECKSAPPASS... | Success | 015 check-Phase Checks the SAP user and password for all clients on source and target system | 2017-08-02 14:53:04 +0200 | 2017-08-02 14:53:04 +0200 |
| LCHECKCLIENTS | Success | 016 check-Phase Check client related settings before the copy process | 2017-08-02 14:53:11 +0200 | 2017-08-02 14:53:11 +0200 |

SAP System Copy Running Flow

| Instance Name | Type | Status | Start Time |
|---|----------|---------|---------------------------|
| SAP_SYSTEM_COPY_SB | Workflow | Running | 2017-08-02 14:51:31 +0200 |
| LSC_01_Import LSC TASK for SAP System Copy | Windows | Success | 2017-08-02 14:42:29 +0200 |
| LSC_02_Create LSC WF for SAP System Copy | Windows | Success | 2017-08-02 14:45:28 +0200 |
| Import SAP System Copy Configuration from LSC | Workflow | Success | 2017-08-02 14:42:29 +0200 |

SAP System Copy: Pre Phase

| Instance Name | Status | Task Description | Start Time | End Time |
|-----------------|---------|---|---------------------------|---------------------------|
| LLPCONFIGEXP | Success | 067 pre-Phase LPCONFIG: Export content of SOAP related tables | 2017-08-02 14:58:43 +0200 | 2017-08-02 14:58:50 +0200 |
| LDBCONEXP | Success | 068 pre-Phase DB59: Export content of Database Connection Settings tables | 2017-08-02 14:58:50 +0200 | 2017-08-02 14:58:56 +0200 |
| LCSTCLNTTBLE... | Success | 069 pre-Phase Export content of Custom Client Dependent tables | 2017-08-02 14:58:56 +0200 | 2017-08-02 14:59:03 +0200 |
| LCSTTBLEXP | Success | 070 pre-Phase Export content of Client Independent Custom tables | 2017-08-02 14:59:03 +0200 | 2017-08-02 14:59:09 +0200 |
| LSCSTEXP | Success | 071 pre-Phase SECSTORE: Export security store tables | 2017-08-02 14:59:09 +0200 | 2017-08-02 14:59:16 +0200 |
| LSAPSTOP | Running | 072 pre-Phase SAP: Stop SAP | 2017-08-02 14:59:16 +0200 | |

SAP System Copy all Steps

| Task Name | Task Description | Created |
|-------------|--|---------------------------|
| LOSGET | 001 check-Phase OS: Get version information | 2017-08-02 14:42:29 +0200 |
| LOSCMP | 002 check-Phase OS: Compare version information | 2017-08-02 14:42:29 +0200 |
| LDBSTGET | 003 check-Phase DB: Availability | 2017-08-02 14:42:29 +0200 |
| LDBVERGET | 004 check-Phase DB: Get database version | 2017-08-02 14:42:29 +0200 |
| LDBVERCMP | 005 check-Phase DB: Compare database versions | 2017-08-02 14:42:29 +0200 |
| LDBAUSERCHK | 006 check-Phase DB: Check database users | 2017-08-02 14:42:29 +0200 |
| LSAPCHK | 007 check-Phase SAP: Check SAP running | 2017-08-02 14:42:29 +0200 |
| LKRNLGET | 008 check-Phase SAP: Get SAP release and patch level | 2017-08-02 14:42:29 +0200 |
| LKRNLCMP | 009 check-Phase SAP: Compare SAP release and patch level | 2017-08-02 14:42:29 +0200 |
| LBCDGET | 010 check-Phase SAP: Check for TMS Backup Domain Controller | 2017-08-02 14:42:29 +0200 |
| LTPRODGET | 011 check-Phase SAP: Check target system for production flag | 2017-08-02 14:42:29 +0200 |
| LLOGSYSCHK | 012 check-Phase SAP: Check logical systems | 2017-08-02 14:42:29 +0200 |
| LLICCHK | 013 check-Phase SAP: Check if license file is provided | 2017-08-02 14:42:29 +0200 |

SAP System Copy: Copy Phase

| Instance Name | Status | Task Description | Start Time | End Time |
|-----------------|---------|--|---------------------------|---------------------------|
| LTEST_DBSHAD... | Success | 073 copy-Phase LIBELLE: Check DBShadow processes on source and target server for database copy | 2017-08-02 14:59:20 +0200 | 2017-08-02 14:59:20 +0200 |
| LPDBCOPY | Running | 074 copy-Phase LIBELLE: Copy production DB | 2017-08-02 14:59:26 +0200 | |
| LCOPYCHK | Waiting | 075 copy-Phase DB: Check if database has been copied | | |
| LTDBSWCH | Waiting | 076 copy-Phase LIBELLE: Activate database on target. | | |

SAP System Copy: Post Phase

| Instance Name | Status | Task Description | Start Time | End Time |
|---------------|---------|--|------------|----------|
| LRESTOREUPC | Waiting | 077 post-Phase DB: Copy original UPC file from LSC Data directory to original location | | |
| LRESTDBUSR | Waiting | 078 post-Phase DB: Restore password of DB user in target | | |
| LDBONLINE | Waiting | 079 post-Phase DB: Activate target database | | |
| LSUPERDBASET | Waiting | 080 post-Phase DB: Restore password of SUPERDBA user | | |
| LSAPSIDSET | Waiting | 081 post-Phase DB: Restore password of target schema user | | |

September 11, 2017

[Administrator's Home](#)
[Reporting DWH/SAP](#)
[ETL-HR Workflow SSIS/SAP](#)
[SAP Conversion Monitor](#)
[Docker](#)
[SAP LSC System Copy](#)

[Refresh](#)
[Customize](#)

Real-time Web-based view on the System Copy Process : Example shows final result

stonebranch
SAP® Certified
Integration with Applications on SAP HANA®
Universal Controller™

Test Ctrl
2017-08-02 15:12 +0200 Administrator

SAP System Copy

| Task Name | Type | Task Description |
|---|----------|--|
| Import SAP System Copy Configuration from LSC | Workflow | Import SAP System Copy Configuration from LSC |
| SAP_SYSTEM_COPY_SB | Workflow | SAP System Copy Workflow from LSC |
| LSC_02_Create LSC WF for SAP System Copy | Windows | Create an SAP System Copy Workflow based on the given LSC Task |
| LSC_01_Import LSC TASK for SAP System Copy | Windows | Imports the LSC Workflow based on the given LSC Task |

SAP System Copy: Check Phase

| Instance Name | Status | Task Description | Start Time | End Time |
|---------------|---------|---|---------------------------|---------------------------|
| LOSGET | Success | 001 check-Phase OS: Get version information | 2017-08-02 14:51:32 +0200 | 2017-08-02 14:51:32 +0200 |
| LOSCMP | Success | 002 check-Phase OS: Compare version information | 2017-08-02 14:51:38 +0200 | 2017-08-02 14:51:38 +0200 |
| LDBSTGET | Success | 003 check-Phase DB: Availability | 2017-08-02 14:51:45 +0200 | 2017-08-02 14:51:45 +0200 |
| LDBVERGET | Success | 004 check-Phase DB: Get database version | 2017-08-02 14:51:52 +0200 | 2017-08-02 14:51:52 +0200 |
| LDBVERCMP | Success | 005 check-Phase DB: Compare database versions | 2017-08-02 14:51:58 +0200 | 2017-08-02 14:52:00 +0200 |

SAP System Copy Running Flow

| Instance Name | Type | Status | Start Time |
|---|----------|---------|---------------------------|
| LSC_01_Import LSC TASK for SAP System Copy | Windows | Success | 2017-08-02 14:42:29 +0200 |
| LSC_02_Create LSC WF for SAP System Copy | Windows | Success | 2017-08-02 14:45:28 +0200 |
| Import SAP System Copy Configuration from LSC | Workflow | Success | 2017-08-02 14:42:29 +0200 |
| SAP_SYSTEM_COPY_SB | Workflow | Success | 2017-08-02 14:51:31 +0200 |

SAP System Copy: Pre Phase

| Instance Name | Status | Task Description | Start Time | End Time |
|-----------------|---------|---|---------------------------|---------------------------|
| LLPCONFIGEXP | Success | 067 pre-Phase LPCONFIG: Export content of SOAP related tables | 2017-08-02 14:58:43 +0200 | 2017-08-02 14:58:50 +0200 |
| LDBCONEXP | Success | 068 pre-Phase DB59: Export content of Database Connection Settings tables | 2017-08-02 14:58:50 +0200 | 2017-08-02 14:58:56 +0200 |
| LCSTCLNTTBLE... | Success | 069 pre-Phase Export content of Custom Client Dependent tables | 2017-08-02 14:58:56 +0200 | 2017-08-02 14:59:03 +0200 |
| LCSTTBLEXP | Success | 070 pre-Phase Export content of Client Independent Custom tables | 2017-08-02 14:59:03 +0200 | 2017-08-02 14:59:09 +0200 |
| LSCSTEXP | Success | 071 pre-Phase SECSTORE: Export security store tables | 2017-08-02 14:59:09 +0200 | 2017-08-02 14:59:16 +0200 |
| LSAPSTOP | Success | 072 pre-Phase SAP: Stop SAP | 2017-08-02 14:59:16 +0200 | 2017-08-02 14:59:20 +0200 |

SAP System Copy all Steps

| Task Name | Task Description | Created |
|-------------|--|---------------------|
| LOSGET | 001 check-Phase OS: Get version information | 2017-08-02 14:51:32 |
| LOSCMP | 002 check-Phase OS: Compare version information | 2017-08-02 14:51:38 |
| LDBSTGET | 003 check-Phase DB: Availability | 2017-08-02 14:51:45 |
| LDBVERGET | 004 check-Phase DB: Get database version | 2017-08-02 14:51:52 |
| LDBVERCMP | 005 check-Phase DB: Compare database versions | 2017-08-02 14:51:58 |
| LDBAUSERCHK | 006 check-Phase DB: Check database users | 2017-08-02 14:52:00 |
| LSAPCHK | 007 check-Phase SAP: Check SAP running | 2017-08-02 14:52:00 |
| LKRNLGET | 008 check-Phase SAP: Get SAP release and patch level | 2017-08-02 14:52:00 |
| LKRNLCMP | 009 check-Phase SAP: Compare SAP release and patch level | 2017-08-02 14:52:00 |
| LBDGGET | 010 check-Phase SAP: Check for TMS Backup Domain Controller | 2017-08-02 14:52:00 |
| LTPRODGET | 011 check-Phase SAP: Check target system for production flag | 2017-08-02 14:52:00 |
| LLOGSYSCHK | 012 check-Phase SAP: Check logical systems | 2017-08-02 14:52:00 |
| LLICCHK | 013 check-Phase SAP: Check if license file is provided | 2017-08-02 14:52:00 |

SAP System Copy: Copy Phase

| Instance Name | Status | Task Description | Start Time | End Time |
|-----------------|---------|--|---------------------------|---------------------------|
| LTEST_DBSHAD... | Success | 073 copy-Phase LIBELLE: Check DBShadow processes on source and target server for database copy | 2017-08-02 14:59:20 +0200 | 2017-08-02 14:59:20 +0200 |
| LPDBCOPY | Success | 074 copy-Phase LIBELLE: Copy production DB | 2017-08-02 14:59:26 +0200 | 2017-08-02 14:59:33 +0200 |
| LCOPYCHK | Success | 075 copy-Phase DB: Check if database has been copied | 2017-08-02 14:59:33 +0200 | 2017-08-02 14:59:40 +0200 |
| LTDBSWCH | Success | 076 copy-Phase LIBELLE: Activate database on target. | 2017-08-02 14:59:40 +0200 | 2017-08-02 14:59:40 +0200 |

SAP System Copy all Steps

| Task Name | Task Description | Created |
|-------------|--|---------------------|
| LSRVCHK | 200 post-Phase SM51: Perform server check | 2017-08-02 15:10:32 |
| LBTJBREL | 201 post-Phase SE38: Execute SAP standard report BTCTRSN2 | 2017-08-02 15:10:38 |
| LR211RESET | 202 post-Phase RZ11: Resets the maximum runtime of dialog work processes to the SAP profile values | 2017-08-02 15:10:45 |
| LT000ORGIMP | 203 post-Phase SCC4: Import logical system names final settings | 2017-08-02 15:10:52 |
| LBUFRESET_2 | 204 post-Phase Reset SAP buffers after changing client protection settings | 2017-08-02 15:10:58 |

SAP System Copy: Post Phase

| Instance Name | Status | Task Description | Start Time | End Time |
|---------------|---------|--|---------------------------|---------------------------|
| LSRVCHK | Success | 200 post-Phase SM51: Perform server check | 2017-08-02 15:10:32 +0200 | 2017-08-02 15:10:32 +0200 |
| LBTJBREL | Success | 201 post-Phase SE38: Execute SAP standard report BTCTRSN2 | 2017-08-02 15:10:38 +0200 | 2017-08-02 15:10:38 +0200 |
| LR211RESET | Success | 202 post-Phase RZ11: Resets the maximum runtime of dialog work processes to the SAP profile values | 2017-08-02 15:10:45 +0200 | 2017-08-02 15:10:45 +0200 |
| LT000ORGIMP | Success | 203 post-Phase SCC4: Import logical system names final settings | 2017-08-02 15:10:52 +0200 | 2017-08-02 15:10:52 +0200 |
| LBUFRESET_2 | Success | 204 post-Phase Reset SAP buffers after changing client protection settings | 2017-08-02 15:10:58 +0200 | 2017-08-02 15:10:58 +0200 |

Administrator's Home
Reporting DWH/SAP
ETL-HR Workflow SSIS/SAP
SAP Conversion Monitor
Docker
SAP LSC System Copy

Refresh
Customize

Agenda

October, 6; 10:30 – 11:00

01 Introduction Libelle AG
Company Overview, Partnership etc.

02 Solution Libelle SystemCopy
Typical assumptions, benefits

03 Live Demo

04 Joint Solution Overview
Joint value proposition

05 Summary



- ✓ System Refresh / Copy process as “blackbox” – job, orchestrated by Stonebranch
- ✓ Customers who currently perform job-scheduling only within SAP, are able to automate additional tasks outside of SAP
- ✓ Increased data quality for non-production systems
- ✓ Increased application Quality through better Test Data
- ✓ Increased Automation for SAP copy processes
- ✓ Reduced cost through
 - ✓ Reduced time
 - ✓ Reduced skill
 - ✓ Elimination of manual steps
 - ✓ Reduced error
 - ✓ Higher degree of Automation
- ✓ End-to-End process control
- ✓ No SAP Intervention required



Thank you!

Frank Bayer

Director Sales & Marketing

Libelle AG

Frank.bayer@libelle.com

+491741975719



Libelle

