



Stonebranch Solutions

Indesca & Infitran
Release 4.2.0 and Below

ii-420-OIA-D01770

Open Issue Alert

ST  nebranch

Document Name	Indesca & Infitran 4.2.0 Open Issue Alert
Document ID	ii-420-OIA-D01770
Products	Indesca & Infitran 4.2.0 and below

Copyright © 2011 by Stonebranch, Inc.

This document contains proprietary information that is protected by copyright. All rights reserved. No part of this publication may be reproduced, transmitted or translated in any form or language or by any means, electronic or mechanical, including photocopy, recording, or any information storage and retrieval system, without permission, in writing, from the publisher. Requests for permission to make copies of any part of this publication should be mailed to:

Stonebranch, Inc.
950 North Point Parkway, Suite 200
Alpharetta, GA 30005 USA
Tel: (678) 366-7887
Fax: (678) 366-7887

Stonebranch, Inc.® makes no warranty, express or implied, of any kind whatsoever, including any warranty of merchantability or fitness for a particular purpose or use

The information in this documentation is subject to change without notice.

Stonebranch shall not be liable for any errors contained herein or for incidental or consequential damages in connection with the furnishing, performance or use of this document.

All products mentioned herein are or may be trademarks of their respective owners.



Contents

Contents	4
Overview	5
Details	5
Setup for Problem Scenario	6
Results of a Problem Scenario	8
Before Committing Management Console Profile	8
After Committing Management Console Profile	9
Workaround	10

Open Issue Alert

UACL (Universal Access Control Lists) configuration updates made through the Management Console may delete existing definitions.

Product:	Indesca and Infitran
Release:	4.2 and below
Resolution:	Release 4.3, planned delivery March 31, 2011
Workaround	Yes

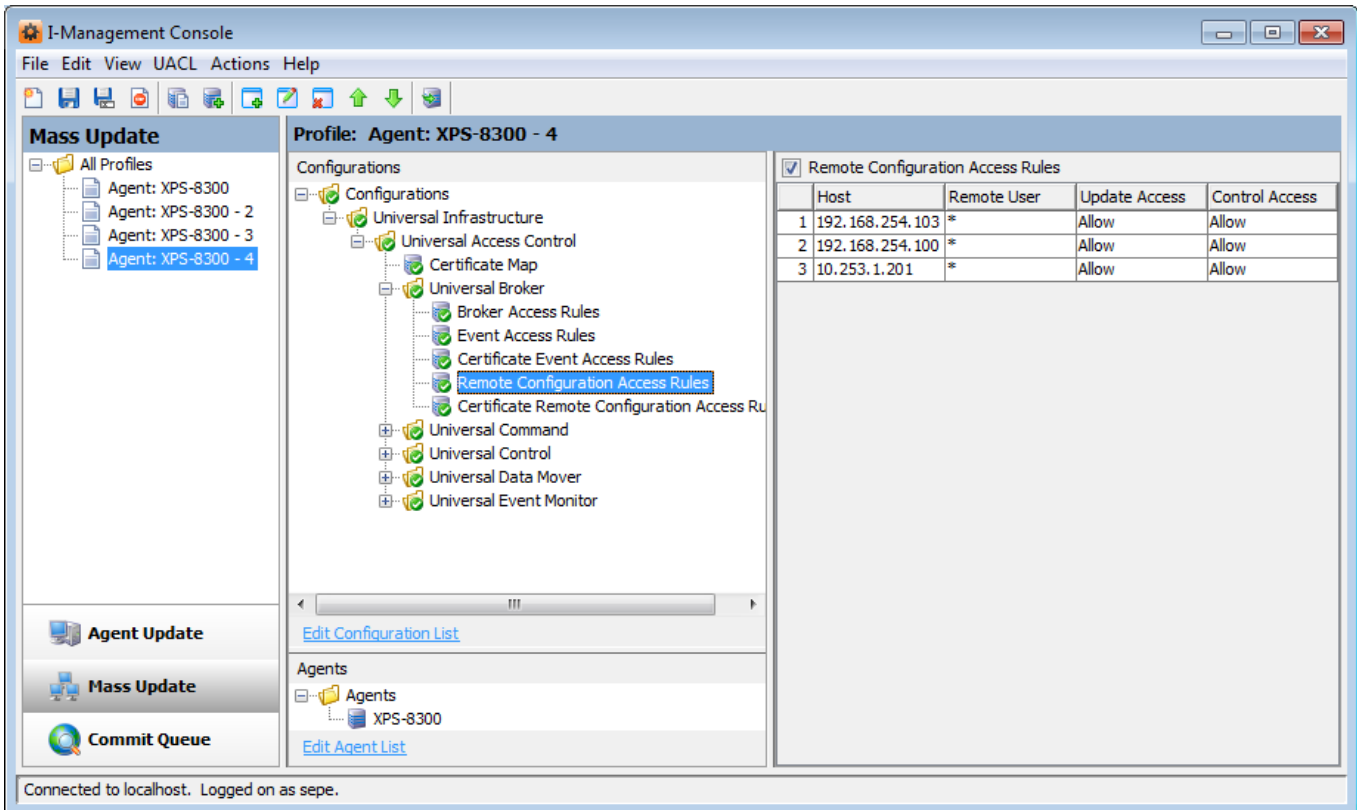
Details

With release 4.2 or below of the Management Console, any commit that includes an empty ACL rules table will result in **all** ACL entries being deleted from each agent specified in the commit.

As a result, any activity that relies on an ACL rule will fail for the effected agents. This includes, but is not limited to, the Remote Configuration ACL, which would cause additional commits from the Management Console to be rejected.

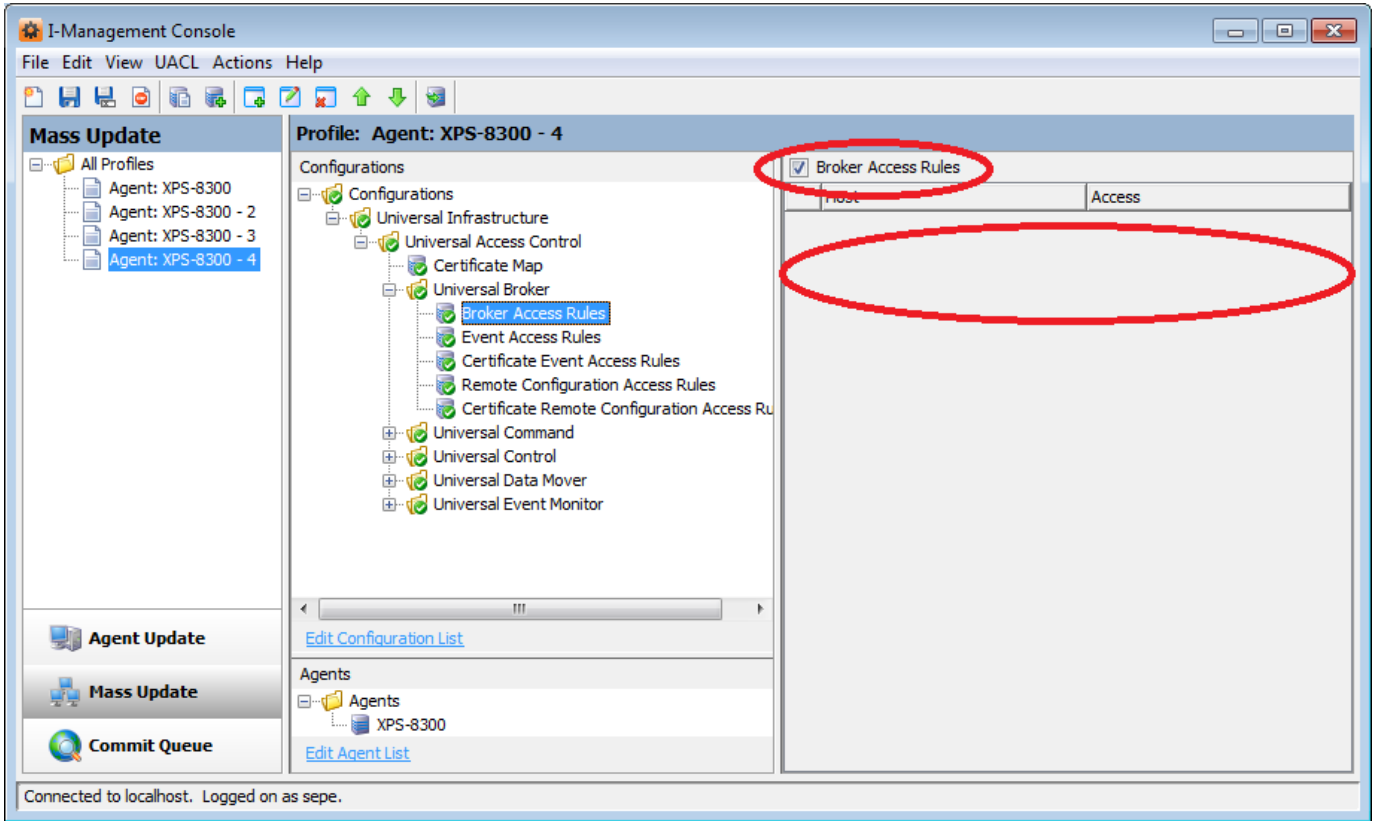
Setup for Problem Scenario

In the screenshot below, we see that the Remote Configuration Access Rules table contains three entries. Therefore, we can say that the Remote Configuration Access Rules table is not empty.



Also in this profile, we have access rules tables that **are** empty and are **selected to be included** in a commit.

The following screenshot shows an example of an empty table that has been selected for inclusion in a commit. In this case, the table is Broker Access Rules.



Results of Problem Scenario

Before Committing Management Console Profile

In this example, we will assume we have a `uac1.conf` file with some entries for remote configuration access rules.

The following screenshot shows the contents of the `uac1.conf` file.

```
#
#   uem_maintenance      *,allow,allow,allow,allow
#
#
#####
#
# UACL Entries Section
#
#####
#
remote_config_access 192.168.254.103,*,allow,allow
remote_config_access 192.168.254.100,*,allow,allow
remote_config_access 10.253.1.201,*,allow,allow
```

After Committing Management Console Profile

After committing the profile, all rules in the configuration file are deleted. It is important to note that all rules, regardless of the type, will be deleted.

The following screenshot shows the empty configuration file that results from the commit.

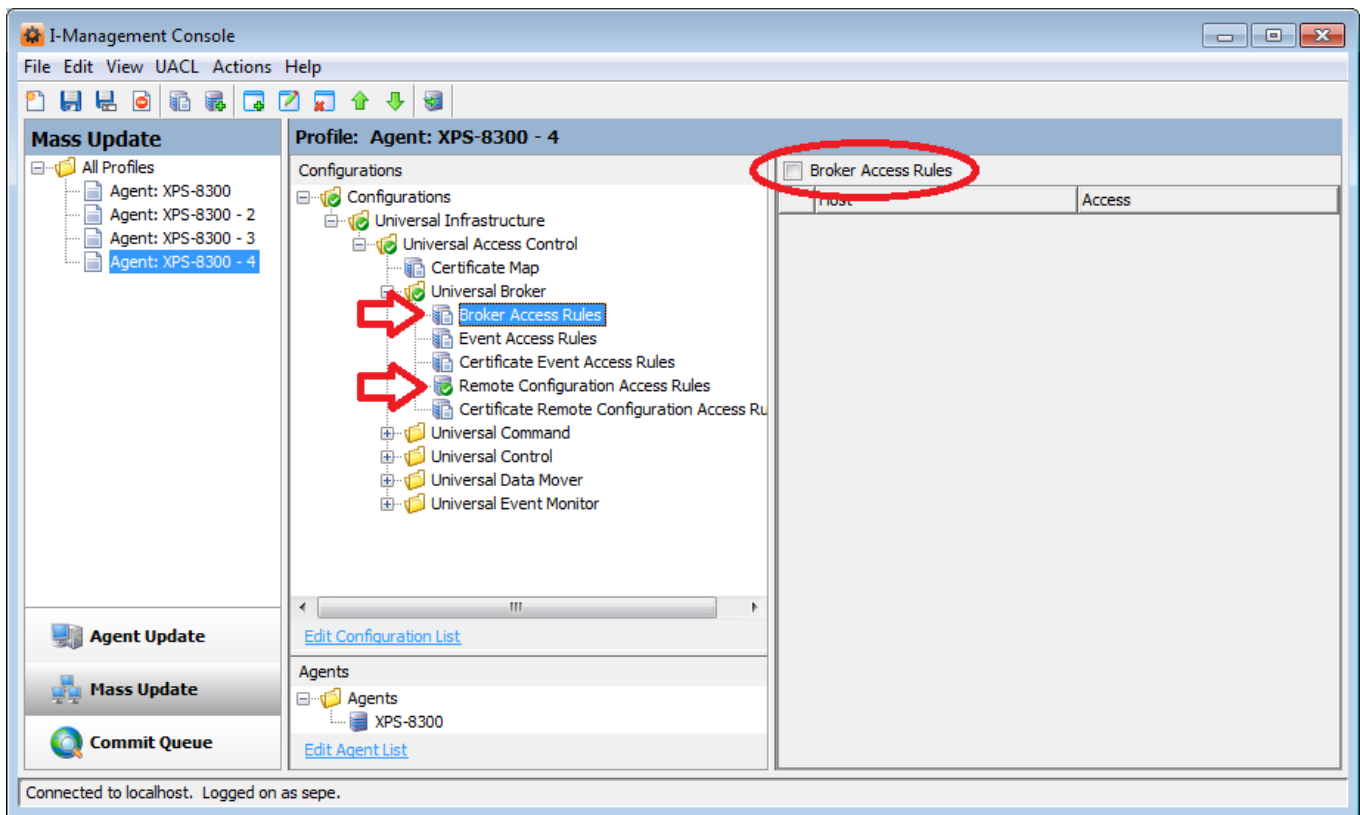
```
#   uem_maintenance      *,deny,deny,deny,deny
#
# Default:
#
#   uem_maintenance      *,allow,allow,allow,allow
#
#####
#
# UACL Entries Section
#
#####
#
```

Workaround

In order to prevent the problem described above, all empty ACL rules tables must be deselected prior to a commit.

The following screenshot shows the same profile from above with all ACL rules tables deselected, with the exception of the Remote Configuration Access Rules table (which is not empty).

Note the red circle that shows that the empty Broker Access Rules table has been deselected. Also, the red arrows show the differences in the tree icons for tables that have been selected and tables that have been deselected. Only tables that have been selected to be included in the commit have a tree icon embellished with the green checkmark ball. In this example, the ACL rules will be successfully updated as expected.





950 North Point Parkway, Suite 200
Alpharetta, Georgia 30005
U.S.A.

